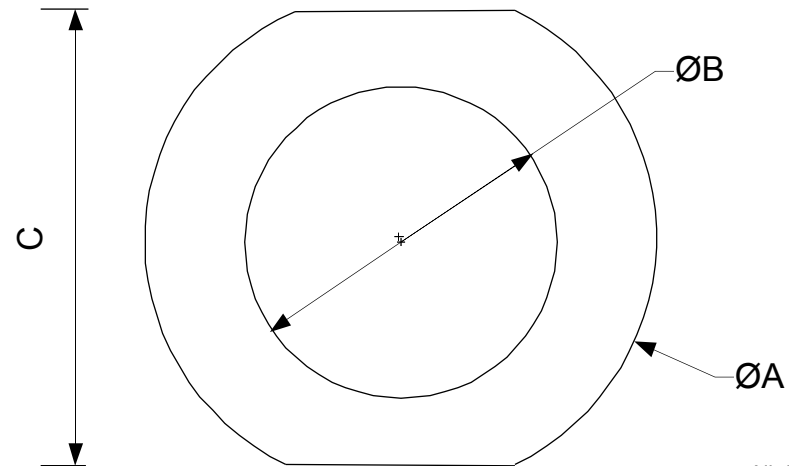
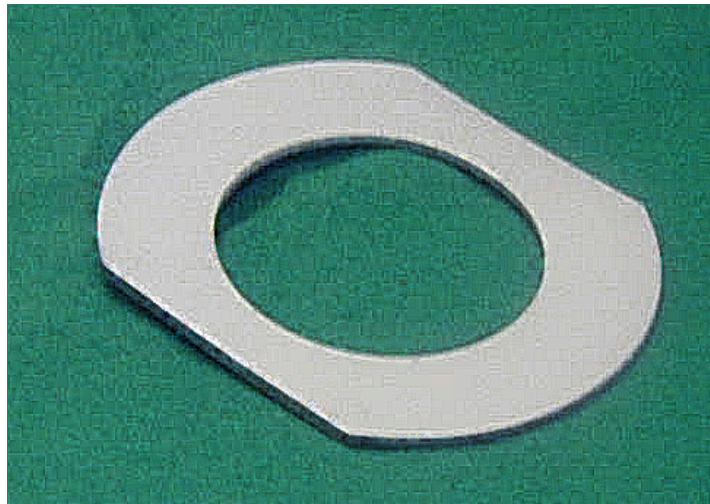


Product Data Sheet

JOINTING RINGS - Twin Flat

Application : Reinforcement of swaged joints on Lighting Columns, Sign Posts, CCTV and Power Transmission Poles



Material - Low carbon Steel to EN 10130 FePo4 - 3mm Thick Finish - Self Colour

All dimensions in Millimetres

Regent Part No	Description	Dimn A	Dimn B	Dimn C	Base O/D	Base Wall T	Shaft O/D
1289	140MM X 76MM TWIN FLAT RING	131	77	110	139.7	2.5 - 4.0	76.1
1126	140MM X 89MM TWIN FLAT RING	131	91	110	139.7	2.5 - 4.0	88.9
1125	168MM X 89MM TWIN FLAT RING	159	77	140	168.3	2.5 - 4.0	76.1
1294	168MM X 89MM TWIN FLAT RING	159	91	140	168.3	2.5 - 4.0	88.9
1295	168MM X 114MM TWIN FLAT RING	159	116	140	168.3	2.5 - 4.0	114.3
0159	192MM X 114MM TWIN FLAT RING	179	116	160	192 - 193.7	2.5 - 4.0	114.3
0161	192MM X 140MM TWIN FLAT RING	179	141	160	192 - 193.7	2.5 - 4.0	139.7
0591	140MM X 76MM TWIN FLAT RING (HEAVY WALL)	127	77	110	139.7	5.0 - 6.0	76.1
1296	168MM X 89MM TWIN FLAT RING (HEAVY WALL)	154	116	140	168.3	5.0 - 6.0	88.9
1297	168MM X 114MM TWIN FLAT RING (HEAVY WALL)	154	116	140	168.3	5.0 - 6.0	114.3

The Regent Engineering Co. (Walsall) Ltd Salisbury Street Darlaston Wednesbury West Midlands WS10 8XB UK

E-mail : info@regenteng.com

Web : www.regenteng.com

Phone 44 (0)121 526 6060

Fax : 44(0)121 526 4789

© 2012